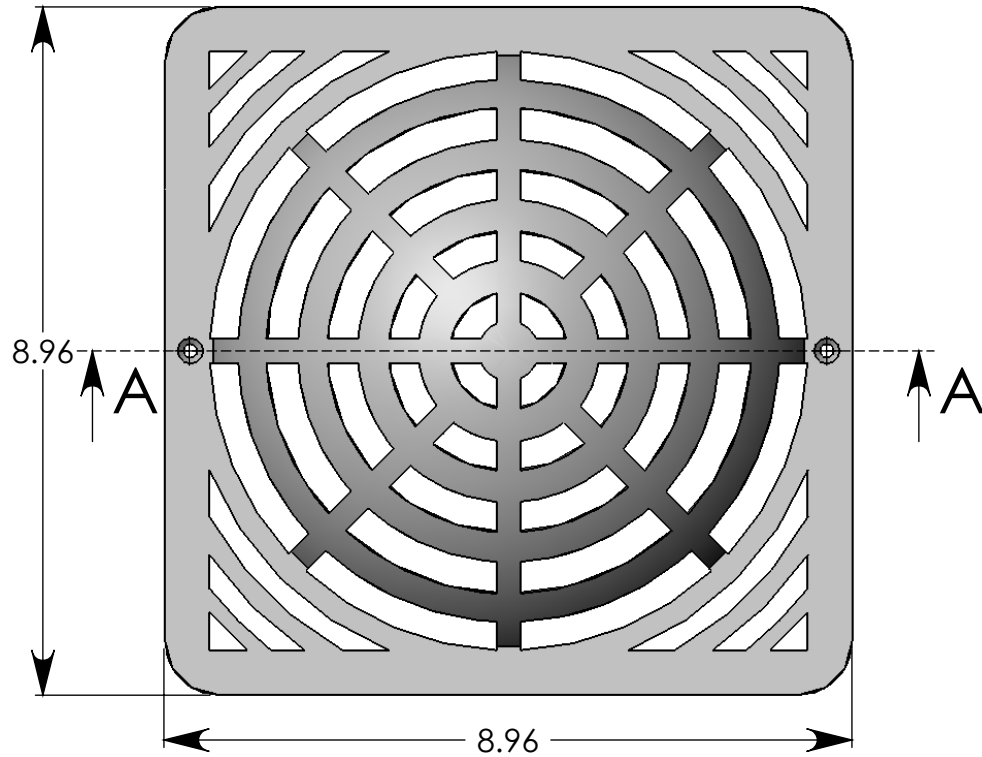
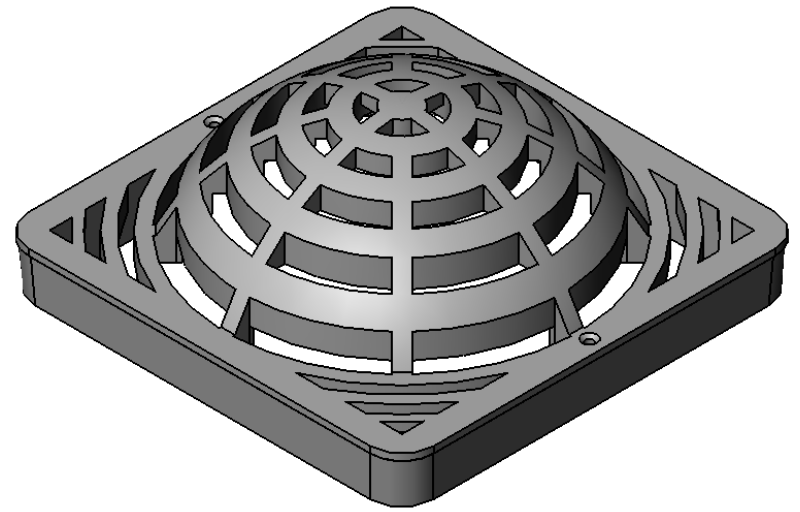


SECTION A-A



Use with FSD-090-CB-2 (9" Catch Basin)

|            |              |
|------------|--------------|
| Material:  | Polyethylene |
| Open Area: | 30 sq. in.   |
| Flow Rate: | 39.7 GPM     |
| ADA:       | No           |
| Wt. Class: | No           |
| Heel:      | No           |
| Color:     | Black        |



FSD-094-A

Atrium Grate

01 Oct 09

